

# BLUE MAGIC<sup>®</sup>

## ANTI-SPATTER



**METHYLENE CHLORIDE FREE ANTI-SPATTER - NOW IN AN AIR-POWERED CAN!**

### SUPERIOR PERFORMANCE WITHOUT THE HARMFUL CHEMICALS

The same trusted Blue Magic<sup>®</sup> Anti-Spatter formula is now available in a nonflammable, air-powered spray can! Blue Magic<sup>®</sup> is a water-based, non-toxic product formulated for superior performance in industrial welding applications. With an innovative spray can design using only compressed air, 100% of the product is usable down to the last drop. Silicone-free formula allows parts to go straight from production to paint without additional cleanup time. Contains no Methylene Chloride, which is now banned by the EPA.



#### INDUSTRIAL STRENGTH PROTECTION

Excels in applications where quality is a must



#### ENVIRONMENTALLY FRIENDLY

Biodegradable, no carcinogens, recyclable can



#### WATER-BASED & NON-TOXIC FORMULA

Contains no methylene chloride or other hazardous chemicals



#### NONFLAMMABLE, AIR-POWERED CAN

Spray can utilizes only noncombustible air for a propellant



#### SUPERIOR PAINTABILITY

No oils or silicone that negatively affect paint



#### 360° SPRAYING ABILITY

Consistent spray pattern from any angle – even upside down



#### 100% USABLE PRODUCT

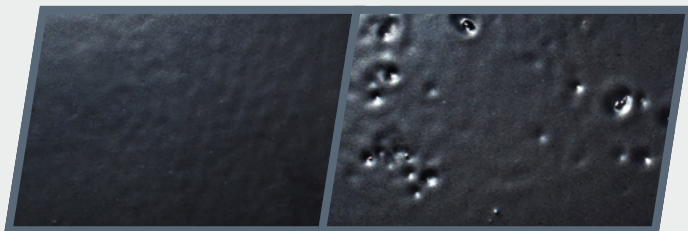
100% usable product with bag-on-valve spray can



#### PROUDLY MADE IN USA

American-made for superior quality, avoids import tariffs

### EASY CLEANUP WITH PROFESSIONAL QUALITY RESULTS FOR PAINTED SURFACES



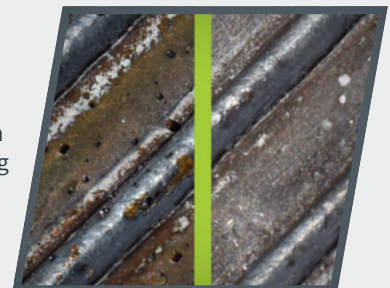
**BLUE MAGIC<sup>®</sup>**

**COMPETITOR**

Silicone-free formula contains no ingredients that cause imperfections in paint.

#### EASY CLEANUP!

Finish work taking up too much time? Blue Magic<sup>®</sup> provides a layer of protection when applied to parts, making spatter removal easy. The anti-spatter itself also cleans up quickly, leaving behind no residue.

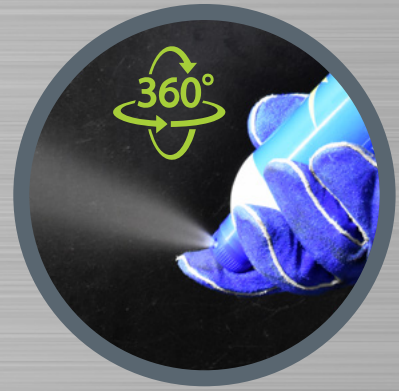




**BLUE MAGIC®**



**OTHER SPRAY CANS**



**360°**



**GLOVE-FRIENDLY LOCKING TRIGGER**

Larger actuator with upward angle sprays evenly on surfaces, not your glove. Locking trigger design requires no cap.



**360° SPRAYING**

Even spray pattern from all angles — even upside down!

**ANTI-SPATTER & NOZZLE CLEANING SOLUTIONS FOR ROBOTIC WELDING**

Manifold kits available for 5 gal or 55 gal drums of Blue Magic®.



**ANTI-SPATTER MULTI-STATION DISPENSING SYSTEM SETUP**



Cleaning Station in cell #1

Cleaning Station in cell #2

Cleaning Station in cell #3

**Blue Magic® & Torch Wizard® Robotic Nozzle Cleaning Stations form the perfect combination to maximize robotic welding performance!** Blue Magic®, as well as Blue Magic® HD and Blue Chill®, are available in 1 gal, 5 gal and 55 gal containers for robotic applications. Multi-station bulk anti-spatter dispensing ability is standard on all Torch Wizard® models.



**COMBINE THE POWER OF BLUE MAGIC® WITH POWERBALL® TORCHES & CONSUMABLES FOR THE ULTIMATE WELDING PRODUCTIVITY!**

PowerBall® High Performance Semi-Automatic and Robotic MIG Torches are engineered to provide maximum conductivity with increased consumable life. The revolutionary design features an all-copper current path for consistent welding performance, superior cooling and faster arc starts. **Proudly Made in USA for fast shipping and no tariff surcharges!**

**SAMPLE CANS AVAILABLE CONTACT YOUR WIRE WIZARD® TECHNICAL SALES EXPERT OR VISIT WIRE-WIZARD.COM TO REQUEST SAMPLES**



ELCo Enterprises, Inc. • Jackson, Michigan USA  
317.782.8040 • sales@wire-wizard.com

WireWizard\_Anti-Spatter-Can | v1.8

**wire-wizard.com**